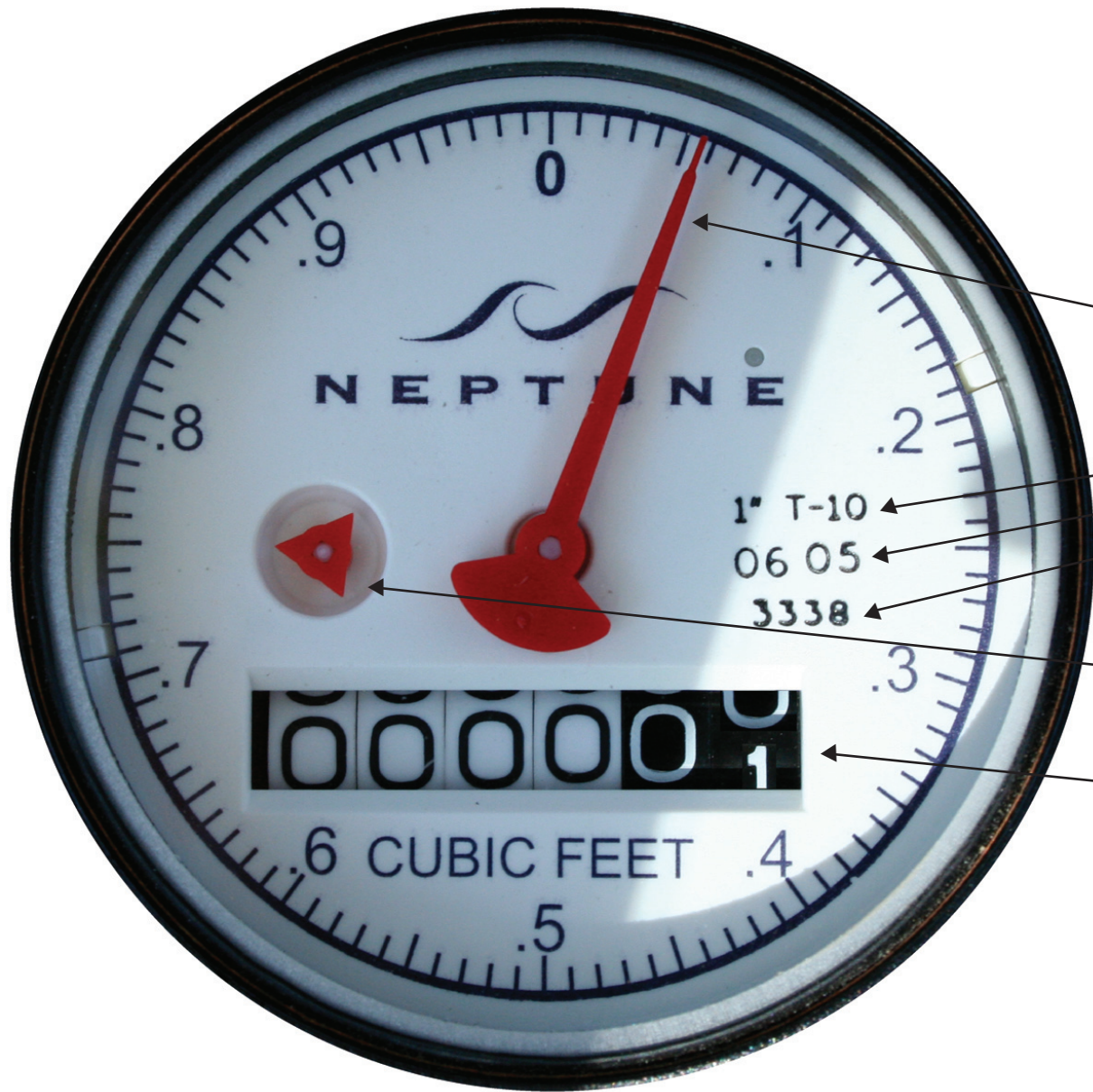


LAGUNA BEACH COUNTY WATER DISTRICT- HOW TO READ YOUR WATER METER



Knowing how to read your meter is valuable for three reasons:

1. You might be interested in knowing how much water you use in your household each day.
2. Check for leaks.
3. It can help you determine how much water each appliance uses in your home.

Water Dial - The red dial shows cubic feet used in tenths. For every single revolution the dial spins, you have used 1 cubic foot of water, which is equivalent to 7.48 gallons.

Meter Info - These series of numbers indicate:
1. Size of the meter (1") and Model Number (T-10)
2. Date and year manufactured (06 05)
3. Meter Lot Number

Flow Finder - This triangle spins counter-clockwise as water flows through the meter. If all water in the home is turned off, but the triangle is spinning, you may have a small leak.

Meter Read - The white and black numbers represent the amount of water registered in cubic feet. You can compare this number with the number indicated on your water bill. One unit (1 Cubic Foot) of water equals 748 gallons of water used.

Meter location - The meter is usually located near the curb in front of your home and housed in a concrete box usually marked "water."